

# WELFORD CHART NOTES NEWSLETTER

Volume 42, No. 6



June, 2013

copyright 2013, Welford Medical Computing, Inc.

All rights reserved



## VERSION 6.3 CERTIFIED FOR MEANINGFUL USE

Version 6.3 has been certified by InfoGard Laboratories as a complete ambulatory EHR for Meaningful Use.

## ELECTRONIC PRESCRIBING SURESCRIPTS SIG RESTRICTIONS *(User's Manual, pgs. 1289-1290).*

When you send prescriptions electronically via NewCrop to SureScripts, there are certain restrictions which are placed on what is permitted in the Sig: field. Version 6.3 has been enhanced in order to prevent you from sending information in this field which is improperly formatted. However, it is not possible to anticipate every possible permutation of what a user might decide to place into this field, so you should be mindful of the following rules when writing the Sig:

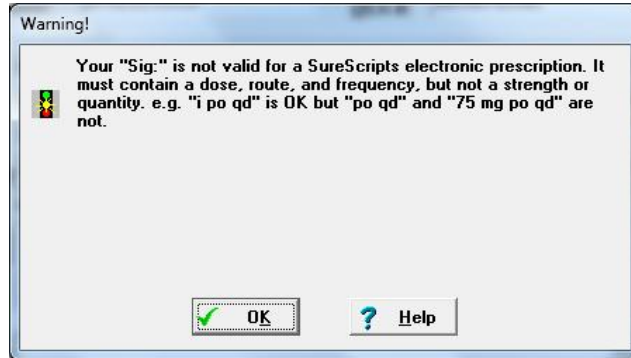
1. The Sig must contain a dosage, route and frequency. For example, "i po daily" or "ii tabs po qid prn pain" are acceptable, but "po daily", "as directed", or "ii tabs po" are not because they don't contain all 3 elements.
2. The Sig must NOT contain any of the following:
  - a. Medication strength (e.g. "40 mg" is NOT permitted in the Sig; strength belongs in the Rx portion, e.g. "Lasix 40 mg").
  - b. Quantity (e.g. "#30" is NOT permitted; place the quantity in the # field).
  - c. Description of the medication is not permitted (e.g. "DS", "CR", "CD", "XL" are NOT permitted; they should be included as part of the drug name (e.g. "Bactrim DS", "Cardizem CD").
  - d. Dosage form of the medication is not permitted (e.g. "MDI", "inhaler", "cream", "ointment", "solution", "gel" and the like are NOT permitted; they are part of the drug name, e.g. "albuterol MDI", "hydrocortisone cream").
  - e. Conflicting instructions. (e.g. "Inhale 1 - 2 puffs PRN. Inhale 2 - 4 puffs every 4 - 6 hours PRN" doesn't make sense).
  - f. Conflicting dosage forms (Rx is for tablets, but Sig says to take "one capsule").
3. Do NOT type information in the **Comment** box which conflicts with the Sig. For example, if the Sig reads: "Take 1 - 2 tablets by mouth daily as directed" but the **Comment** reads: "Take 2 tablets by mouth on day 1, then 1 tablet by mouth on days 2 - 5", these are conflicting. If you want the patient to take 2 tablets on day 1 and one on days 2-5, place that information into the Sig.
4. Do NOT type information in the Comment box which represents the Quantity. For example, if you prescribe 8 ounces of cough syrup, the Quantity is "8"; SureScripts does NOT want you to type into the **Comment** box: "8 ounces".

Note that when using the Prescription Writer from the Medication Editor, the program automatically puts the strength into the Rx field for you. When using the Prescription Log, the **Drug** field can only contain the name of the medication, and you place the strength or dosage form into the **Instruction** box, but **Welford Chart Notes** automatically extracts the strength and dosage form portions in the **Instruction** box and places it into the Rx field in NewCrop and removes it from the Sig field.

SureScripts also forbids that you include instructions to the pharmacist in the Sig field. If you wish to send instructions to the pharmacist beyond the actual Sig, then write these in the Comment box of the Prescription Writer or Prescription Log, and they are sent to NewCrop as the message to the pharmacist. **Welford Chart Notes** cannot automatically remove those portions of the Sig field that are considered to be

instructions to the pharmacist. The Sig field should only contain the number of tablets, capsules, drops etc.; the route of administration; and the frequency of administration.

If you specify a Sig which fails to contain the dosage, route, or frequency, you will see the following warning:



The program takes you back to the Sig: field so that you can edit it before it permits you to send the prescription to NewCrop.

### **REVISED SPELLING CHECKER** (*User's Manual, pg. 1297*)

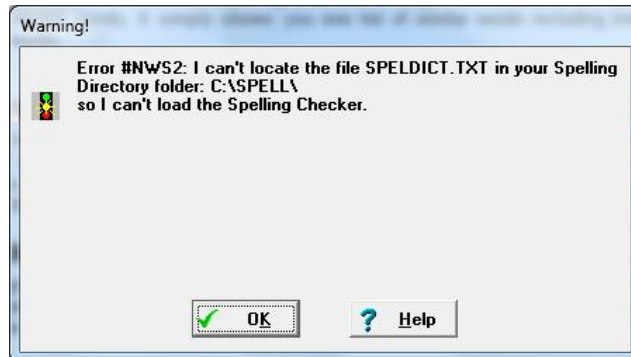
Version 6.3 has a completely revised Spelling Checker from previous versions. It contains all of the words in the previous version, along with many new ones, and retains any words that you have previously added yourself. All of the words that come with the program are stored now in a single file in your Spelling Directory (System\Directory Options) called SPELDICT.TXT.

This revision took place because the previous architecture of the Spelling Checker had reached a mathematical limit which did not allow for additional spelling words to be included in the program. The new architecture has no such mathematical limit.

You may also notice that there are no longer options to do a Medium and Wide search when you check spelling. The program does a single search of all of the spelling words and presents them to you.

The program also automatically checks the spelling within the bottom pane of the Template Wordlist when you are using a Wordlist.

If you see the following error message:



This means that you have not installed SPELDICT.TXT into the Spelling Checker folder. Make sure that you have set System\Directory Options to the correct folder where you have installed SPELDICT.TXT.

### **SEND US YOUR TIPS**

If you have tips, shortcuts, questions, or suggestions for future newsletter topics, please send them to us at:

Welford Medical Computing, Inc.  
3779 Hermitage Trail  
Rockford, IL 61111

or  
MEDCOM Information Systems  
2117 Stonington Avenue  
Hoffman Estates, IL 60195