

WELFORD CHART NOTES NEWSLETTER

Volume 40, No. 4



April, 2012

copyright 2012, Welford Medical Computing, Inc.

All rights reserved



DYNAMED LINK (*User's Manual, pg. 1241*)

DynaMed is an authoritative encyclopedic online reference of medications and diagnoses, updated daily. If you are a registered user of DynaMed, you can jump from **Welford Chart Notes** (in the Diagnosis Editor, Medication Editor, Prescription Writer, Dose Checker, etc.) to the relevant topics in DynaMed. Let's see how this is done.

1. Press Write\Diagnoses.
2. Enter Kelly Erickson as the name of the patient.
3. Highlight a diagnosis on her problem list, for example "Hashimoto's thyroiditis".
4. Press **Utility**\DynaMed.
5. Note that DynaMed lists the chapters that discuss this diagnosis, with Hashimoto's thyroiditis at the top of the list. Click on that to see the detailed information about this diagnosis.

You can also add a Toolbar button so that you can have one click access to DynaMed from anywhere in **Welford Chart Notes**:

1. Press your right mouse button anywhere on your Toolbar, or press Tools\Toolbar, to open the Toolbar Editor.
2. Click your left mouse button in the Toolbar button that you want to assign to DynaMed.

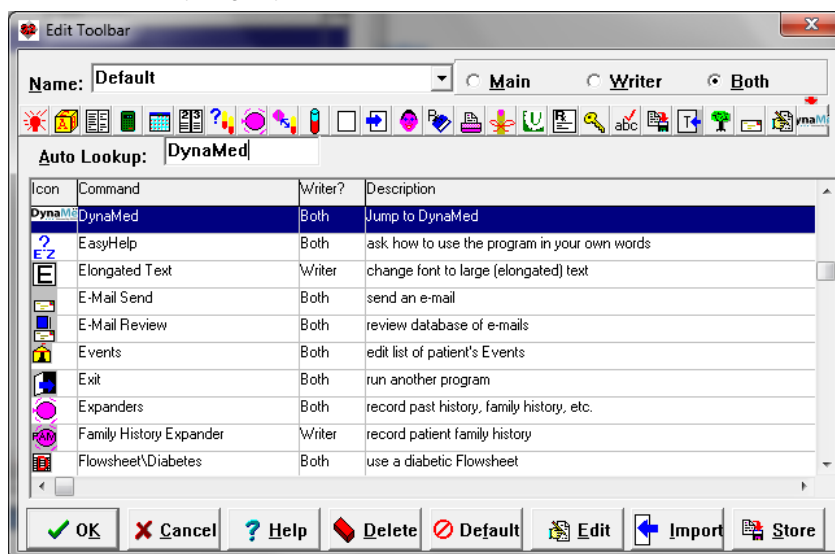
3. In the **Auto lookup** box, start typing “Dyna...”

4. Double-click the **DynaMed** line to assign DynaMed to this button.

5. Press **OK** to store this Toolbar.

6. Try clicking the **DynaMed** Toolbar button to see that it launches DynaMed.

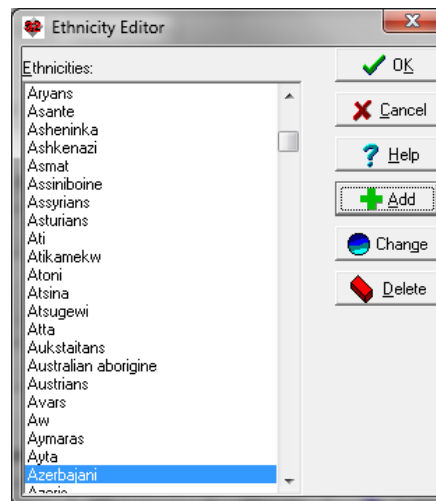
7. On the DynaMed screen, type in any drug or disease you wish to research.



USER-DEFINED ETHNICITIES *(User's Manual, pgs. 1250-1251)*

Although the Name Editor comes loaded with over 1400 ethnic groups, some users wish to add their own names to this list. Let's see how to do that:

1. Press Name\Edit and enter the name of any patient.
2. Double-click on the Ethnicity box.
3. Click the **Edit** button.
4. The Ethnicity Editor opens. Press **Add**.
5. Type in the name of the Ethnicity that you wish to add to the list and press **OK**.



APRIL QUARTERLY UPDATE RELEASED

This month we are releasing the April, 2012 Quarterly update. The update includes new medications, diagnostic terms, drug interactions, drug dosing information, spelling words, drug-disease Alerts, Web Links, algorithms, medication test reminders, cross-reacting allergies, indications, and dozens of new patient education brochures. This update has over 9700 drug interactions with over 3100 references, over 12,200 Alerts, over 10,000 Web Links, over 8000 Indications, over 1900 Medication Test Reminders, and over 1650 Brochures, including new or revised Brochures on aflibercept, azilsartan-chlorthalidone, belatacept, cabazitaxel, clobazam, indacaterol, ivacaftor, ruxolitinib, sipuleucel-T, vandetanib, age-related macular degeneration, coronary artery disease, cystic fibrosis, epilepsy, focal segmental glomerulosclerosis, Friedreichs ataxia, hidradenitis suppurativa, hyperparathyroidism, myelofibrosis with myeloid metaplasia, ovarian cancer, parkinsonism, thyroid cancer, and others. It also includes the [User's Manual](#) and [Getting Started Guide](#) in .PDF format.

NEWS ON VERSION 6.2

We are hard at work developing new features for version 6.2. If there are features that you would like to see in this version, please let us know at support@emirj.com, or call MEDCOM Information Systems at 800-213-2161.

SEND US YOUR TIPS

If you have tips, shortcuts, questions, or suggestions for future newsletter topics, please send them to us at:

Welford Medical Computing, Inc.
3779 Hermitage Trail
Rockford, IL 61114

or
MEDCOM Information Systems
2117 Stonington Avenue
Hoffman Estates, IL 60195