

WELFORD CHART NOTES NEWSLETTER

Volume 45, No. 1



January, 2014

copyright 2014, Welford Medical Computing, Inc.

All rights reserved



VERSION 6.5 RELEASED!

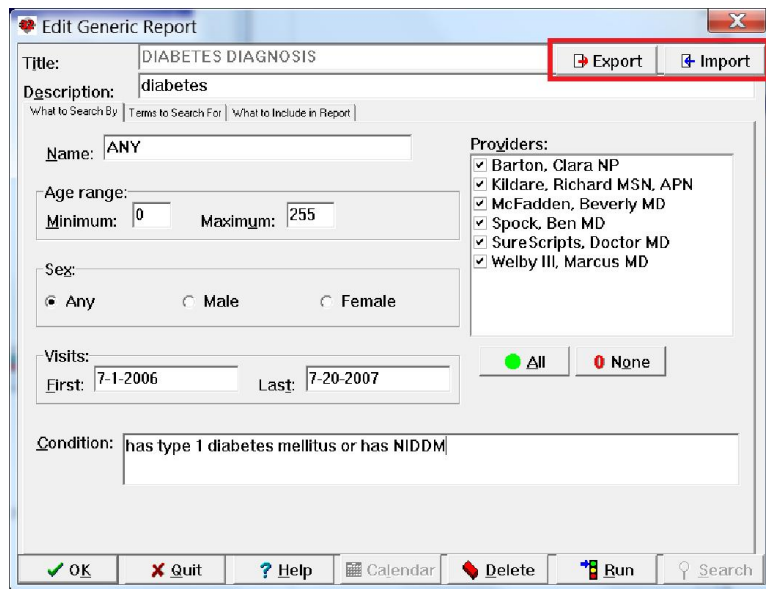
We are proud to announce the release this month of version 6.5 of **Welford Chart Notes**.

Version 6.5 has many new features. These new features include:

- **@Diag2Col**: display diagnoses in a table with two columns.
- **@LabSince** and **@LastLabSince _Category Flag**: organize lists of previous lab results by Lab Book Category.
- **@LastCategory<CategoryName>**: replaced with the most recent results of tests which belong to a particular Lab Book Category.
- **Appointment Scheduler Reindexer**: rebuilds the index to the Appointment Scheduler.
- **Creatinine Clearance Report CKD-EPI Formula**: calculates an estimated creatinine clearance based on the new CKD-EPI Formula.
- **Cross-Reacting Allergy Skip List**: designate cross-reacting allergy warnings that you no longer wish to see.

Patient	Drug 1	Drug 2	User	Recorded	Deleted
JONES, FREDA	SULFONAMIDES	GLIPIZIDE	Beverly McFadden	8-4-2013 9:32 a.m.	
BOOP, ELIZABETH	SULFONAMIDES	GLIPIZIDE	ALL	8-4-2013 10:21 a.m.	

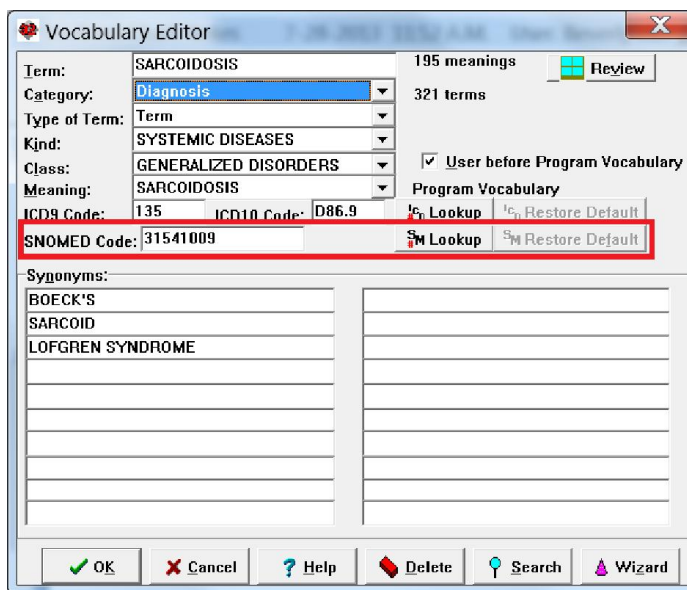
- **Document Type Print Setting Group Applied on the Screen:** immediately see changes in the Writer when you change the Document Type which has an associated Print Settings Group.
- **Generic Report Generator Export and Import:** import and export Generic Report Generator report definitions to share them with other practices.



- **High-Resolution Display Support:** view Welford Chart Notes on a high-resolution display.
- **Image Utility Print with In-Box Comments:** print the In-Box Comments attached to an Image Utility image.
- **Medication Editor Print Includes Patient Birthdate:** include the birth date of the patient when printing the medication list.

- **Name Editor Last Name and First Name 25 Characters:** first names and last names of patients can have up to 25 characters each.
- **Name Editor Show Code Numbers:** see the patient code numbers when selecting the name of the patient.
- **Pharmacy Clear:** put blank space in all of the Pharmacy Editor fields in preparation for doing a Search by Example.
- **Pharmacy Fix:** rebuild the index to the Pharmacy Editor.
- **Pharmacy Search by Example:** locate all of the pharmacies having a particular street, city, state, or other specifications.
- **Prescription Log Print and Redisplay Groups:** quickly print or redisplay entries in the Prescription Log having a particular pattern of Status and Method.
- **Print Settings Group Footer @ Symbol:** print the @ symbol in the Footer of a document by typing @@ in the Print Settings Group Footer box.
- **Procedure Code Diagnoses Shows Assessment of Current Note:** view the Assessment portion of the current note when deciding which diagnoses to assign to that note.
- **Procedure Code HL7 Background File Includes Birthdate:** the Procedure Code HL7 Background File now includes the patient's birthdate.
- **Quality Measures Fallouts and Compliers Export to File in CSV Format:** patients who are Fallouts or Compliers to a Quality Measure can be exported to a CSV file.
- **Quality Measures Limit CPT Codes to Range of Time:** Quality Measures can be limited to patients who had a group of CPT codes only during a particular range of time within the reporting period.

- **Reparse One Test:** you can parse a group of previously stored notes for the results of a specific test.
- **Rule Reminders Test Brochures:** write Rule Reminders which detect whether a patient has received a Brochure on a particular topic.
- **Rule Reminders Test Risk:** write Rule Reminders which detect whether a patient belongs to a particular risk group.
- **SNOMED-CT Codes:** assign SNOMED CT codes to each diagnosis in the Diagnosis Editor, and look up the appropriate SNOMED CT codes for any diagnosis. The program comes with all 770,000 SNOMED CT diagnoses.
- **Version Log:** see when you started using each version of the program and its data files.
- **Vital Signs Form Auto Check Spelling:** automatically check your spelling as you enter text into the Vital Signs Form.
- **Vital Signs Form Last Weight Option:** optionally show the patient's most recent weight, date of that weight, and change between that weight and today's weight when you place the contents of the Vital Signs Form into the Writer.
- **Vital Signs Form Risk Stored in Lab Book:** if you designate a Risk on the Vital Signs Form, that information is stored in the Lab Book.
- **Writer Change Document Type:** you can change the Document Type of the document which you currently have loaded in the Writer, rather than after you have stored it.



JANUARY QUARTERLY UPDATE RELEASED

This month we are releasing the January, 2014 Quarterly update. The update includes new medications, diagnostic terms, drug interactions, drug dosing information, spelling words, drug-disease Alerts, Web Links, algorithms, medication test reminders, cross-reacting allergies, indications, and dozens of new patient education brochures. This update has over 10,900 drug interactions with over 3300 references, over 12,300 Alerts, nearly 10,000 Web Links, over 8100 Indications, over 137,000 spelling words and over 1750 Brochures, including new or revised Brochures on adalimumab, afatinib, apixaban, brimonidine gel, buprenorphine-naloxone, canakinumab, certolizumab, dolutegravir, golimumab, infliximab, levomilnacipran, lurasidone, miltefosine, radium 233, amebiasis, attention deficit-hyperactivity disorder, bipolar disorder, brain tumors, carotid artery disease, chronic myelogenous leukemia, depression, deep vein thrombosis, migraine, obesity, prostate cancer, rosacea, schizophrenia, systemic lupus erythematosus, ulcerative colitis, and others.

SEND US YOUR TIPS

If you have tips, shortcuts, questions, or suggestions for future newsletter topics, please send them to us at:
 Welford Medical Computing, Inc. or MEDCOM Information Systems
 3779 Hermitage Trail 2117 Stonington Avenue
 Rockford, IL 6111 Hoffman Estates, IL 60195