

# WELFORD CHART NOTES NEWSLETTER

Volume 42, No. 1



January, 2013

copyright 2013, Welford Medical Computing, Inc.

All rights reserved



## DRAGON MEDICAL TESTED



**Welford Chart Notes** is proud to be Dragon® Medical Tested. What this means is **Welford Chart Notes** has passed the Dragon Medical Self-Evaluation for EHRs by ensuring compatibility with Dragon Medical, the world's leading front-end speech recognition solution.

## VERSION 6.3 RELEASED

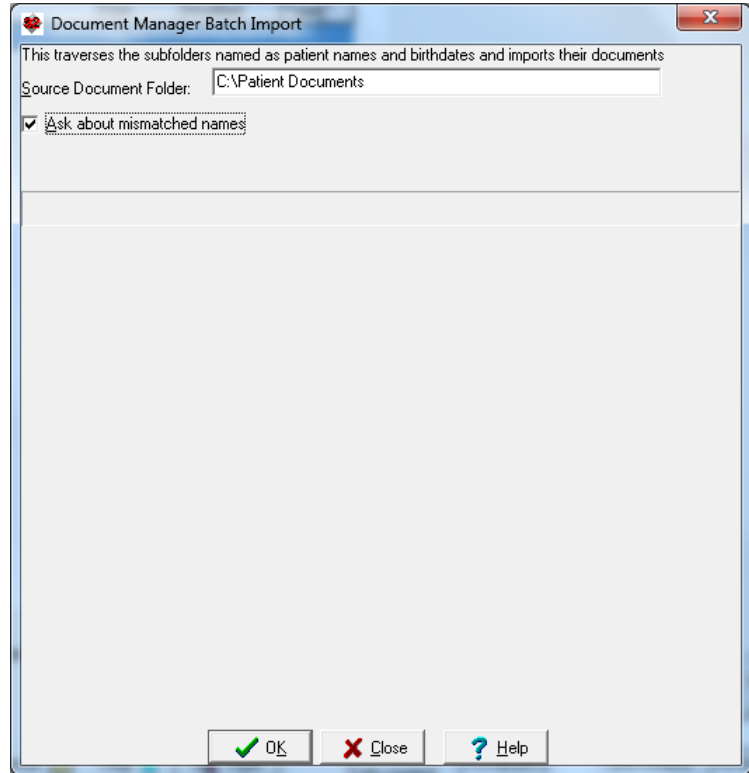
We are proud to announce the release this month of version 6.3 of **Welford Chart Notes**.

Version 6.3 has many new features. These new features include:

- **@AllReferrals\_Last<Interval>**: provide a list of Referrals recorded within a recent interval of time.
- **@BMIPercentile, @HeadCircPercentile, @HeightPercentile, @WeightPercentile**: provide the percentile value of a patient's most recent recorded vital sign.
- **@LabSinceLastVisit\_Chronologic**: list the test results since the most recent visit in chronological order.
- **@LabSince\_Patient, @PatOrdersToday, @PatOrdersTodayActive, @PatOrdersNotYetScheduled**: list recent test results or orders with the name of the test translated into plain English for the patient.
- **@MedsBeforeTodayNoVaccines and @PatMedsBeforeTodayNoVaccines**: list medications that the patient was taking prior to today's visit, using medical or plain English terminology.
- **@OrdersTodayActive**: list Orders which are active on today's date.
- **@RxLogYesterday**: list prescriptions that were recorded yesterday.
- **Appointment Letters and Postcards Log**: see when patients were sent letters and postcards reminding them about upcoming Appointments.
- **Attaché Records Contractions, Templates, and Template Wordlists**: The Attaché now keeps track of changes made to Contractions, Templates, and Template Wordlists.
- **Batch Print by Patient Print Settings Group**: see and adjust the Print Settings Group when you print notes by patient.

- **Conditional Template Nesting:** bring other Templates into your current Template based on whether a conditional statement about a patient is true (such as whether a patient has a diagnosis, is taking a medication, is a particular age or gender, etc.).
- **Datebook Date <Number><Interval>:** type a number and an interval of time or its abbreviation into the Datebook Add window when specifying a date.
- **Datebook Fix One Patient:** repair the index of the Datebook for a single patient.

- **Document Manager Importer:** import a large number of Documents into the program as a single batch.



- **Document Manager Remembers Position and Column Widths:** the program remembers the last position and column widths that each user designated for the Document Manager.

- **Document Type Preferred Print Settings Group:** designate a preferred Print Settings Group for any Document Type; the program then uses that Print Settings Group each time you print that particular Document Type.

- **Dosages, Drug-Disease Alerts, and Interactions Jump Buttons:** go to another location in the program from these windows, then return where you left off.

- **Electronic Prescription Sig Field:** the program automatically edits the Sig field when you send a prescription electronically via SureScripts.

- **Generic Report Generator Jump:** jump to relevant parts of the patient's chart when you view a patient's name in the output of the Generic Report Generator.

- **Growth Charts:** immediately generate a standardized graph of the child's BMI, height, head circumference, and weight.

- **Help available on workstations:** You can now access Welford Chart Notes Help on each individual workstation on a network.

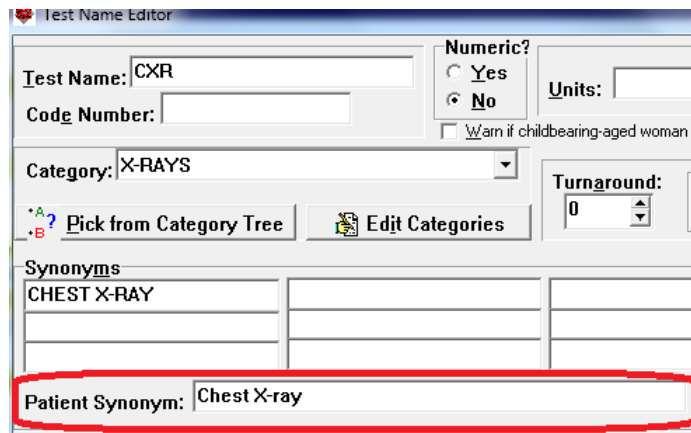
- **In-Box Go To Writer:** jump from the In-Box into the Writer.

- **In-Box Undo:** Undo the last 20 things you did in the In-Box. For example, if you accidentally send an item from the In-Box to another user, you can bring that item back to your In-Box and out of the other user's In-Box.

- **Interactions Skip Topical:** the program no longer warns you about potential drug interactions involving topically applied medications.

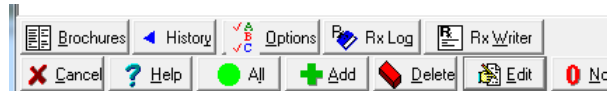
- **Lab Book Ask Toolbar Button:** a new Toolbar button lets you launch the Lab Book but first specify the name of the patient.
- **Lab Book Auto Open Window Remember Column Widths:** The program retains the column widths you designate in the Lab Book Auto Open Window.
- **Lab Book Graph BMI, Head Circumference, Height, and Weight Buttons:** generate growth charts from buttons within the Lab Book Graph window.
- **Lab Book Graph for BMI over Age 5:** generate standardized graphs of BMI for children over the age of five.
- **Lab Book Retain Column Widths:** the program remembers the widths of each column that you designate in the Lab Book.

- **Lab Book Vocabulary Patient Synonym:** designate a synonymous name for a test using plain English that patients can understand. This term is then used in various documents that are given to patients. The program comes with a database of Patient Synonyms but you can edit or add your own to this list.



- **Lab Table Retains Screen Position and Size:** the program remembers the last screen position and size of the Lab Table for each user.

- **Last Pharmacy Print:** when viewing the last Pharmacy, print this information on your printer.
- **Medication Mark Advances to Next Line Option:** decide whether you wish the Mark function in the Medication Editor to automatically move to the next line.
- **Medication Editor Show Extra Buttons Option:** optionally display extra buttons at the bottom of the Medication Editor.



- **Ordered by Default:** the program automatically fills in the Ordered by field in Order Entry.
- **Orders Rebuild Lab Book Links:** you can rebuild the index connecting Orders to their corresponding Lab Book Results, for example if you decide after the fact to increase the number of days by which an Order is considered to be linked to a Lab Book Result.
- **Parser Lab Book Vocabulary Reload:** the program instantly reloads the Lab Book Vocabulary when you add a new term so that the Parser recognizes it without having to leave and restart the Writer.
- **Parser Warn Active Drug Allergy Option:** control whether the Parser warns you about a medication allergy for a medication or allergy that already has been recorded.
- **Prescription Log and Prescription Writer No Provider:** choose No Provider in the Prescription Log and Prescription Writer if you are a mid-level provider who is generating a prescription without a supervising Provider.

- **Prescription Writer Strength in Rx and Sig Option:** optionally decide whether the strength of the medication appears in both the Rx and Sig lines of a prescription.
- **Procedure Codes Include Visit Site Option:** optionally decide whether Procedure Code Reports include information about the Visit Site.
- **Quality Measures Report Displays Pie Charts:** Quality Measures Reports now display results both numerically and in pie charts.
- **Rule Reminder Check Print Letter or Postcard:** you can print a Letter or Postcard on the spot when you are shown a triggered Rule Reminder.
- **Rule Reminder Limit Increased:** each user can now have up to 500 Rule Reminders.
- **Rule Reminder ZIP Code:** Rule Reminders can now test whether a patient lives in a particular ZIP code.
- **Spelling Checker Revised:** the Spelling Checker has been completely revised in order to provide an even larger Vocabulary.
- **Template Pick Window Font Size:** adjust the font size of the Template Pick Window.
- **Template Pick Window Size and Location Retained:** The program remembers the last size and location of the Template Pick Window for each user.
- **Template Wordlist Edit Pane Checks Spelling:** the Template Wordlist Edit pane automatically checks your spelling.
- **Vital Signs Form Temporal Temperature:** the Vital Signs Form allows you to designate the body site of the Temperature as Temporal.
- **Writer Calculate from Last Return Option:** optionally control whether the Writer calculates the next Return interval if you did not specify it in your text based on the Return interval of the previous visit and how long ago that visit occurred.
- **Writer Upcoming Auto Open Window Shows Reminders:** the Writer Upcoming Auto Open Window now shows any upcoming Reminders.

## **JANUARY QUARTERLY UPDATE RELEASED**

This month we are releasing the January, 2013 Quarterly update. The update includes new medications, diagnostic terms, drug interactions, drug dosing information, spelling words, drug-disease Alerts, Web Links, algorithms, medication test reminders, cross-reacting allergies, indications, and dozens of new patient education brochures. This update has over 10,200 drug interactions with over 3200 references, over 12,200 Alerts, nearly 10,000 Web Links, over 8000 Indications, and over 1700 Brochures, including new or revised Brochures on acclidinium, botulinum toxin, elvitegravir-cobicistat-emtricitabine-tenofovir, linaclotide, mirabegron, rilonacept, teriflunomide, tiotropium, Allergic rhinitis, chronic obstructive pulmonary disease, hand eczema, irritable bowel syndrome, multiple sclerosis, parkinsonism, pharyngitis, pulmonary hypertension, smoking, urinary incontinence, and others.

## **SEND US YOUR TIPS**

If you have tips, shortcuts, questions, or suggestions for future newsletter topics, please send them to us at:

Welford Medical Computing, Inc.  
3779 Hermitage Trail  
Rockford, IL 6111

or

MEDCOM Information Systems  
2117 Stonington Avenue  
Hoffman Estates, IL 60195