

# WELFORD CHART NOTES NEWSLETTER

Volume 48, No. 5



November, 2015

copyright 2015, Welford Medical Computing, Inc.

All rights reserved



## ICD-10 ENHANCEMENTS *(User's Manual, pgs. 1246-1248)*

A number of new enhancements have been added to the program in November, 2015 regarding ICD-10 codes. All users are encouraged to obtain the November Update to **Welford Chart Notes** in order to make use of these enhancements. These enhancements include:

- Revised ICD-10 LookUp files, containing the latest ICD-10 codes for 2015.
- Revised ICD-10 codes for Program Vocabulary Diagnoses.
- The ability to store and parse User-Defined Vocabulary terms up to 10 words and 240 characters in length.
- The ability to Import the ICD-10 diagnosis along with the ICD-10 code into the Vocabulary Editor or Diagnosis Add window
- The ability to view the entire list of ICD-10 codes by code number.
- The ability to automatically add the ICD-10 code after each diagnoses mentioned in the assessment portion of your notes

Once you install this update, you should follow these steps:

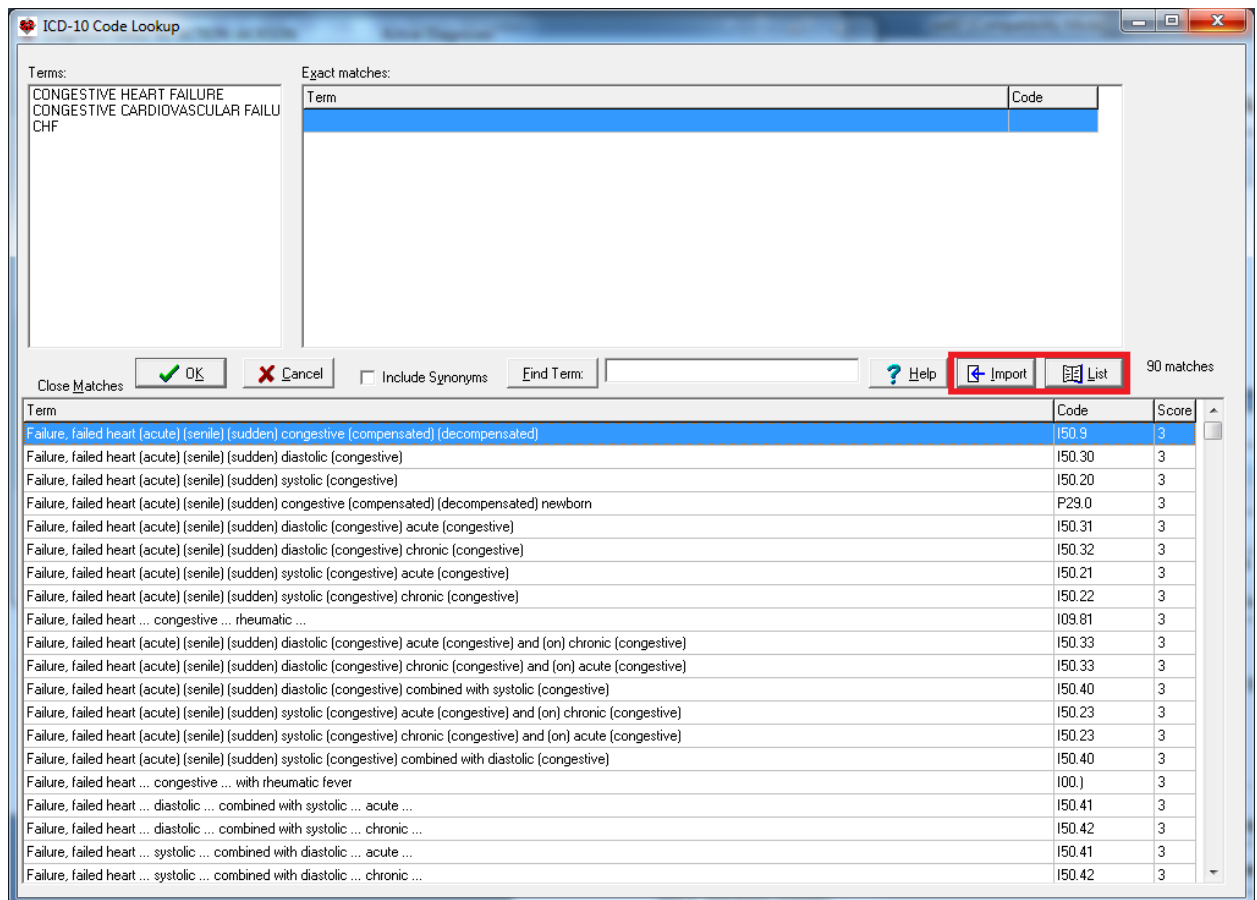
1. Press Library\Vocabulary\Review.
2. For each term on the list which is a Diagnosis which does not have an ICD-10 code yet associated with it:
  - a. double-click it.
  - b. press the **ICD-10 Lookup** button.
  - c. select the most appropriate ICD-10 code from the ICD-10 Lookup window.
  - d. press **OK** to bring it back to the Vocabulary Editor.
  - e. press **OK** to store it in the Vocabulary System.
3. Press System\Diagnosis Options\Assign ICD-10 Codes.
4. If you have not yet been overriding the ICD-10 codes provided by the program for a particular patient, it is recommended that you press **Reassign All Codes**. This will change the ICD-10 codes for all of the diagnoses for all of the patients in the practice to the new 2015 ICD-10 codes, but will replace any patient specific ICD-10 codes you may have assigned inside their Diagnosis Editors. If instead you have already been storing a number of patient specific ICD-10 codes and do not wish to have these overwritten, then instead press **Assign to blank ones**. This choice only records ICD-10 codes for those diagnoses which do not yet have them.

The Program Vocabulary contains thousands of diagnoses, but it does not contain all 68,000 diagnoses in the ICD-10 code vocabulary. (The ICD-10 Lookup and List Functions do have all 68,000 Codes and their diagnoses). Users may wish to add their own more specific diagnoses to the ones already listed in the Program Vocabulary in order to utilize a more specific ICD-10 code.

Let's see how to add your own user-defined ICD-10 code terms:

1. Press Library\Vocabulary.
2. For Term, type in the diagnosis you wish to add to the Vocabulary System, such as "prostate nodule with symptoms".
3. For **Category**, choose **Diagnosis**.
4. For **Type of term**, choose **Term**.

5. Select the appropriate **Kind** and **Class** from the drop-down lists. (In this example, **Kind** would be MALE GENITAL DISORDERS, and **Class** would be PROSTATE DISORDERS).
6. If the **Term** you are adding is a Synonym of a term already listed, then choose that term from the **Meaning** drop-down list. In this example, we are adding a term which is not considered a Synonym of any of the terms already in the system, so in that case instead select "New Meaning".
7. Enter the **Meaning** you wish to use for this new Term. The program defaults to showing you the Term you have already specified, but you are free to enter something else. Then press **OK**.
8. Add **Synonyms** you think you might use for this Term, such as "SYMPTOMATIC PROSTATE NODULE" or "PROSTATE NODULE WITH URINARY TRACT SYMPTOMS",.
9. Press the **ICD-10 Lookup** button.



10. Choose the ICD-10 code which best matches the term you have just added (in this example, N40.3).
11. If you wish to look at similar codes to the one you have just specified, press the **List** button. This shows you a list of all 68,000 ICD-10 codes, alphabetically by code number, and defaults to highlighting the code you just specified. If you type a letter followed by numbers into this window, the highlight moves to whatever code you type. You can look up and down from the code you specified to see if you think there is a closer match to the term you are adding. If you press **OK** from this window, you are taken back to the Vocabulary Editor, with the ICD-10 code you selected from this list filled into the **ICD-10 Code** box. If you would rather return to the ICD-10 Look up window, press **Cancel** instead of **OK**.
12. From the ICD-10 Lookup Window, if you press **OK**, then the code you have highlighted is filled into the **ICD-10 Code** box. If instead you press **Import**, then not only is the ICD-10 code pasted into the Vocabulary Editor, but the term you have highlighted is pasted into the **Term** box (up to a maximum of 10 words and 240 characters, with the commas, parentheses, brackets, and ellipses removed). Remember that it Term or Synonym should not have a comma with in it, because when the Parser interprets a sentence, if it encounters a comma, it considers that to be the end of the diagnosis in a list of diagnoses. For example "diabetes, hypertension, hyperlipidemia" are 3 diagnoses, so don't

use "CHRONIC RENAL FAILURE, STAGE III" as a **Term** or **Synonym**, use "CHRONIC RENAL FAILURE STAGE III".

These enhancements should make it easier for you to choose the right ICD 10 code every time.

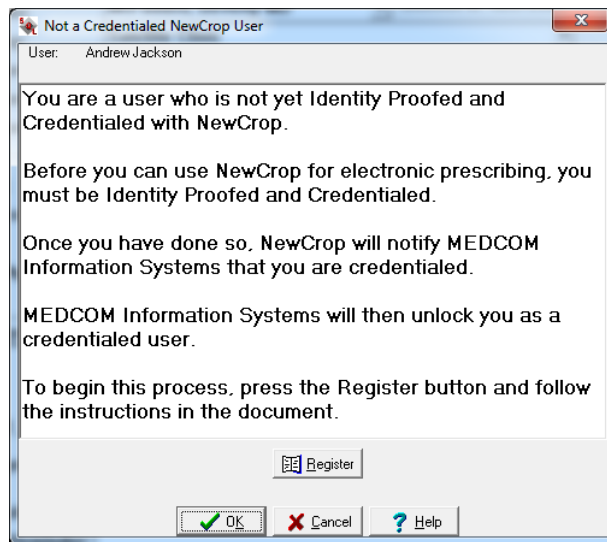
### PARSER AUTO ADD ICD 10 OPTION

If you have activated ICD10 codes (by checking System\Diagnosis Options\Show ICD 10) and have checked System\Parser Options\Parse Diagnoses, if you check **Auto Add ICD-10**, then as your notes are parsed, any diagnoses listed in the assessment section of your note are automatically followed by their corresponding ICD-10 codes (as stored in the Vocabulary System) enclosed in brackets. The assessment section of your note is any text following a label of A:, ASSESS:, or ASSESSMENT: until the end of the note, or a label of P: or PLAN:, whichever comes first. For example, "hypertension" would be replaced with "hypertension [I10]".

### NEWCROP IDENTITY PROOFING AND CREDENTIALING

Effective October 15, 2015, any new users that are added to **Welford Chart Notes** who wish to use NewCrop electronic prescribing must go through a process called "identity proofing and credentialing". (Users of **Welford Chart Notes** before that date are "grandfathered" and do not need to go through this process).

A new user who has not yet gone through this process and attempts to use NewCrop (via Write\Electronic Prescriptions, Write\Prescriptions\ERx NewCrop, or View\Prescription Log\Add\ERx NewCrop) will see the following warning message:



Press the Register button in order to follow the steps necessary to become Identity Proofed and Credentialed. This information is contained in a document called "NewCrop Identity Proofing and Credentialing Service.docx" which is shipped with **Welford Chart Notes**. Once you follow all of the steps in a document, NewCrop will notify MEDCOM Information Systems that you are credentialed. MEDCOM Information Systems will then modify a file in your \CHART folder indicating that you are now a credentialed user. Then, this warning message will no longer appear and you will be able to use all of the NewCrop features of the program.

Note that this feature has nothing to do with printing prescriptions on your own printer. Any user is still permitted to do that (provided that you have given user Security Assign privileges to do so).

### SEND US YOUR TIPS

If you have tips, shortcuts, questions, or suggestions for future newsletter topics, please send them to us at:

Welford Medical Computing, Inc.  
3779 Hermitage Trail  
Rockford, IL 6111

or  
MEDCOM Information Systems  
2117 Stonington Avenue  
Hoffman Estates, IL 60195