

WELFORD CHART NOTES NEWSLETTER

Volume 49, No. 3



March, 2016

copyright 2016, Welford Medical Computing, Inc.

All rights reserved



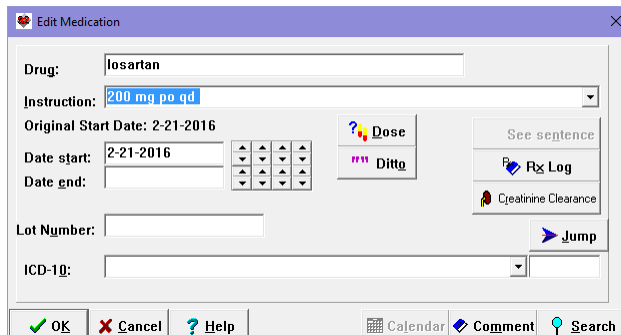
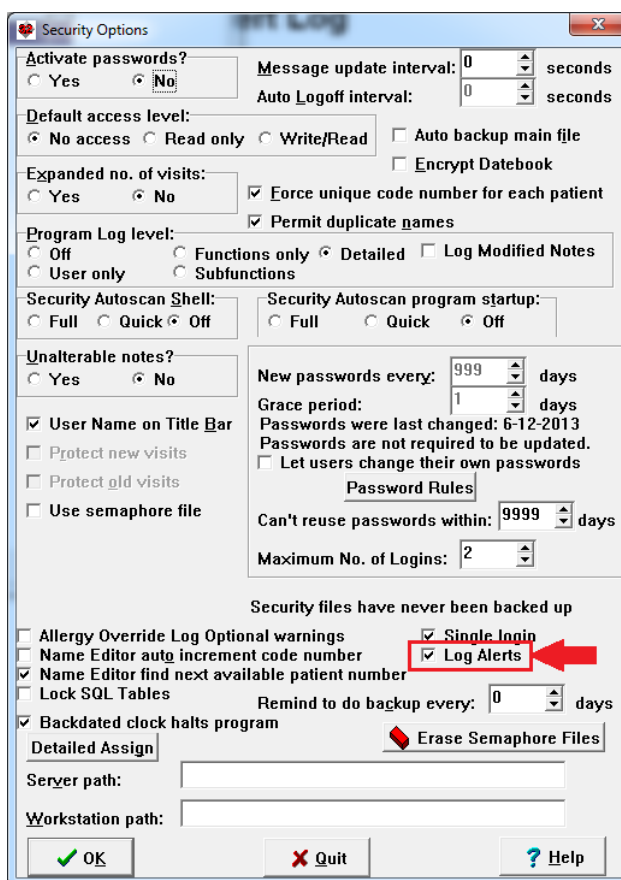
USING THE ALERT LOG *(User's Manual, pgs. 1407-1409)*

Version 6.7 includes a new feature called the Alert Log. This feature lets you review warnings that have been displayed previously. This is especially helpful if you see a warning and dismiss it before realizing what it said and want to look at it again. Let's see how to use it.

1. Press System\Security\Options.
2. Check **Log Alerts** and press **OK**. This activates storage of alerts in the Alert Log. If you don't perform this step, there will be no data in the Alert Log.

Now, let's add some medications for a patient and see the warnings in the Alert Log:

1. Press Write\Medications.
2. Enter the patient's name, for example TOM JONES.
3. Press **Add**.
4. For **Drug**, enter Bactrim DS.
5. For **Instruction**, enter "i po bid".
6. For **Date end**, enter a date 7 days from now.
7. Press **OK**.
8. Press **Add**.
9. For **Drug**, enter losartan.
10. You will see a warning regarding a drug interaction between losartan and Bactrim.
11. For **Instruction**, enter "200 mg po qd".
12. You will see a warning regarding the inappropriate dosing of losartan. Press **OK** to see the detailed information.
13. Press **OK** to store the medication anyway.



Now suppose that you want to see these warnings again:

1. Press Reports\Alert Log.
2. If these warnings just appeared, then they will be at the bottom of today's list and you can simply scroll down to them. However, if some time has elapsed, there may be other warnings on the list.
3. Press **Redisplay**.
4. Leave **Start Date** and **End Date** as today's date (unless you are trying to look at warnings that appeared previous to today).
5. For **Patient**, enter the patient's name as you did in step #2 above (for example TOM JONES).
6. Leave all of the **Alert Types** checked. (Note that you can narrow your display down to just one of these if you wish, for example just the drug interaction warnings).
7. Press **OK**.

Date	Time	Patient	User	Alert Type	Alert	Outcome
2-21-2016	11:45 a.m.	JONES, TOM	McFadden, Beverly	Interaction	LOSARTAN with SULFAMETHOXAZOLE/TRIMETHOPRIM/	Medication was added
2-21-2016	11:45 a.m.	JONES, TOM	McFadden, Beverly	Dose	LOSARTAN: Initial: 50 mg qd; use 25 mg qd if volume depleted or hepatic impair	Medication was added

8. Double-click on any of the lines in the display to see the detailed information about that warning, or highlight a line and press **View**.
9. If you want to print this section of the Alert Log press the **Print** button.
10. If you want to save the information from this section of the Alert Log to a file, press the **File** button.
11. If you want to print or save to file a different portion of the Alert Log, press **Redisplay** first, choose the settings you wish to use, and then press **Print** or **File**.

SEND US YOUR TIPS

If you have tips, shortcuts, questions, or suggestions for future newsletter topics, please send them to us at:

Welford Medical Computing, Inc.
3779 Hermitage Trail
Rockford, IL 6111

or
MEDCOM Information Systems
2117 Stonington Avenue
Hoffman Estates, IL 60195