

WELFORD CHART NOTES NEWSLETTER

Volume 51, No. 2



February, 2017

copyright 2017, Welford Medical Computing, Inc.

All rights reserved



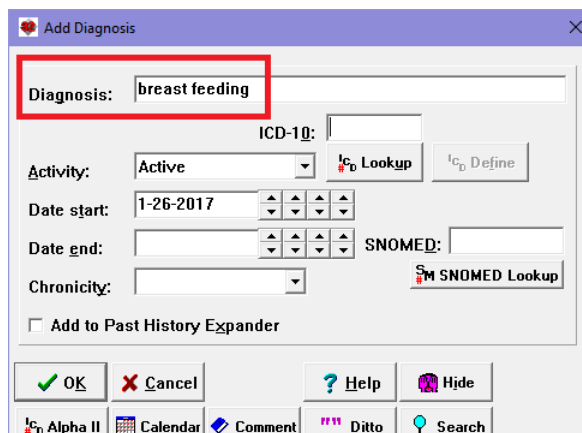
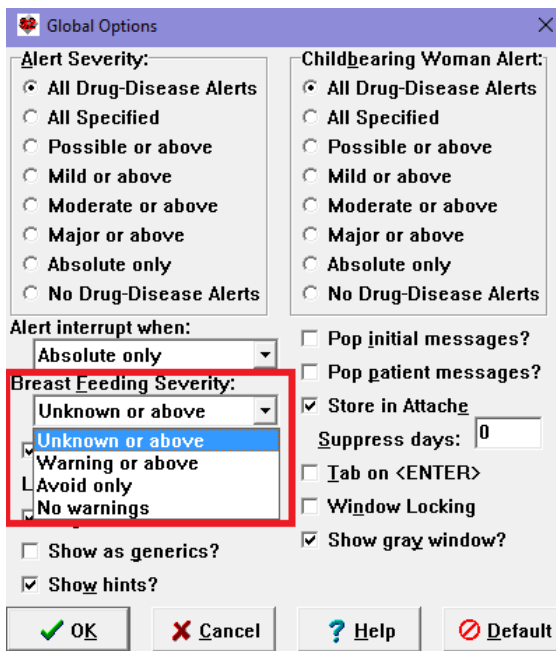
BREAST FEEDING ALERTS *(User's Manual, pgs. 1423-1425)*

Version 6.8 of Welford Chart Notes introduces Breast Feeding Alerts. This feature automatically warns you if a woman who is breast-feeding is placed upon a medication which might be hazardous to the breast-fed baby. You can also look up the breast-feeding warnings for any particular medication directly. Let's see this in action.

1. In order to see Breast Feeding Alerts, you must specify the level of Alerts that you wish to see automatically. Press **System\Global Options\Breast Feeding Severity**.
2. Is generally recommended that each user set this to **Unknown or above**, which warns about all medications except those that are designated as **Safe**. Note that if you don't want to see any of these warnings, you can set this to **No warnings**, but this is not recommended.
3. Press **OK** to store your setting.

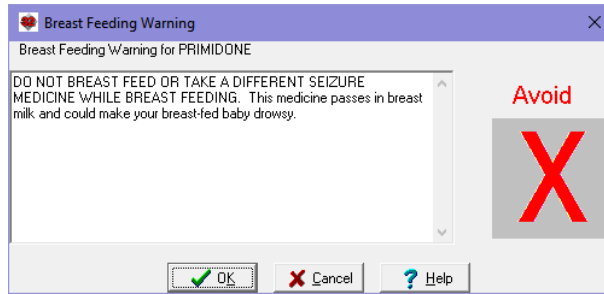
Now let's designate a woman as breast feeding:

1. Press **Write\Diagnoses**.
2. Enter the name of the patient, like Kelly Erickson.
3. Press **Add**.
4. For **Diagnosis**, enter "breast feeding".
5. Note that if you tab off this field or attempt to store it and the patient is too old to plausibly breast-feed, the program warns you of this so that you don't add the diagnosis to the wrong patient.
6. Press **OK** to store this diagnosis.
7. If the patient is currently taking any medications for which there is a Breast Feeding Alert at or above the level of **Breast-Feeding Severity** that you previously designated above, you will immediately see these warnings.



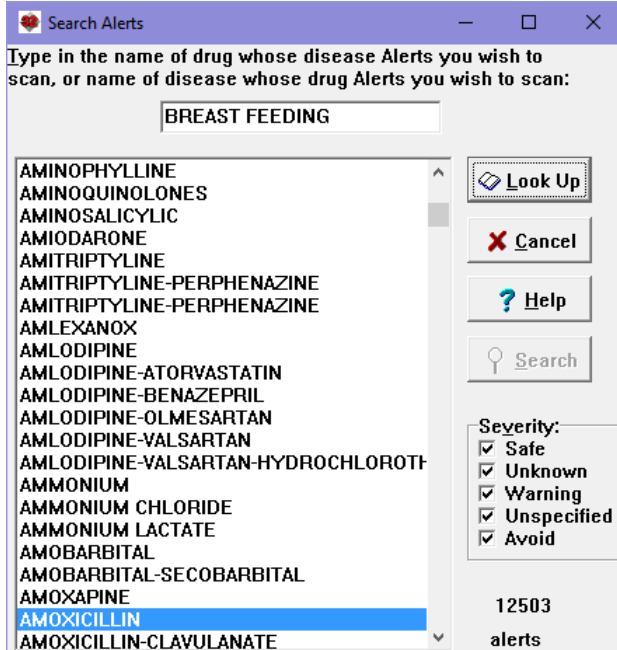
Now let's record that this patient is on a medication which has a Breast Feeding Alert:

1. Press Write\Medications\Add.
2. For **Drug**, enter "primidone".
3. When you tab off the **Drug** field or press **OK**, the program checks for Alerts, including Breast Feeding Alerts. You will see BREAST FEEDING on the Alerts list. Double-click it to read the detailed explanation.
4. Press **OK** or **Cancel** to close this Breast Feeding Warning Window.



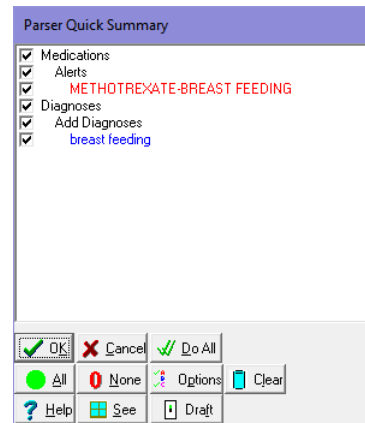
Now, let's see how to look up the alert for specific medication:

1. Press Libraries\Drug-Disease Alerts\Search.
2. For the name of the Drug, enter BREAST FEEDING and press <Tab>.
3. You will now see a list of all the medications for which the program has a Breast-Feeding Alert.
4. As you start to type in the name of the medication, the list scrolls to that location. Try typing in AMOXICILLIN.
5. Double-click the name of the medication or press **Look Up**.
6. You can now read the Breast-Feeding Warnings for that particular medication.
7. Note that you can filter this list by checking only certain choices in the **Severity** box. For example, if you only want to see the list of medications that are safe to use during pregnancy, check the **Safe** box, and uncheck the other boxes.



Let's see how it Parser handles Breast-Feeding Alerts:

1. Press Write\New Note\Note.
2. Enter the name of the patient, choose any Template you wish to use, to start the Writer.
3. In the Writer, if you type a sentence mentioning breast feeding, then the Parser offers to add it as a diagnosis to be added to the Diagnosis Editor. For example, type in the sentence: "This patient is breast feeding."
4. The Parser Quick Summary automatically adds breast feeding to the list of diagnoses to be added. If the patient is currently on any medications which trigger at Breast-Feeding Alert at or above the Severity level you specified in your Global Options, then that Alert also appears in the Parser Quick Summary.



SEND US YOUR TIPS

If you have tips, shortcuts, questions, or suggestions for future newsletter topics, please send them to us at:

Welford Medical Computing, Inc.
3779 Hermitage Trail
Rockford, IL 6111

or MEDCOM Information Systems
2117 Stonington Avenue
Hoffman Estates, IL 60195