

WELFORD CHART NOTES NEWSLETTER

Volume 35, No. 6



December, 2009

copyright 2009, Welford Medical Computing, Inc.

All rights reserved

CREATE YOUR OWN VACCINE RECORD LAYOUT *(User's Manual, pgs. 1093-1095)*

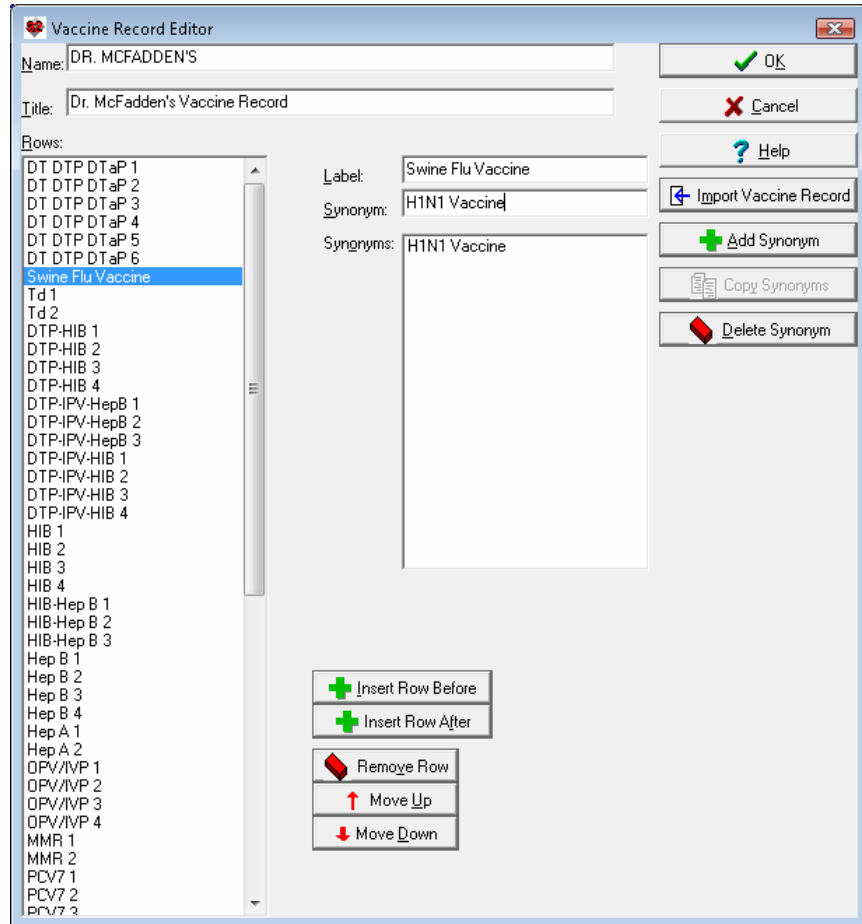
Version 5.7 allows you to design your own Vaccine Record layout using the Vaccine Record Editor. There is no need to do this if you are satisfied with the standard Vaccine Record layout that comes with the program, but some users wish to make their own changes to this layout. Let's see how to do this:

1. Press Reports\Vaccine Record\JUMP\Vaccine Record Editor.

2. Press **ADD** to create your own report format. (Press **EDIT** to revise a format that you have previously created).

3. For **Name**, enter the name you wish to assign to this particular Vaccine Record format. Make the name meaningful to the purpose of the format, so that you can select it later and know its purpose.

4. For **Title**, enter a heading which appears at the top of this Vaccine Record on the screen when you are using it.



You can add vaccines from

scratch to this list, but if there is already a Vaccine Record that has most of the vaccines that you wish to use, you can save yourself a lot of time by importing that Vaccine Record into this one and then editing the changes. Let's try that now.

5. Press **IMPORT VACCINE RECORD**.
6. Select Welford Chart Notes Default Vaccine Record from the Vaccine **Record Name** list
7. When asked if you wish to **REPLACE** the current Vaccine Record with this one, answer **Yes**.

Suppose you wish to insert a blank line between the DT DTP DTap 6 line and the Td 1 line.

8. Highlight the DT DTP DTap 6 and press **INSERT ROW AFTER**.

Suppose you wish to add SWINE FLU VACCINE to the grid in the space that you just added.

9. In **Label**, type Swine Flu Vaccine. Note that this label is now inserted into the blank line you created in step #8.
10. In **Synonym**, type HINI Vaccine and press Add Synonym. (Note: if you have not yet installed version 5.7, you will have to add these terms to the Vocabulary System manually first).
11. Press **OK** to store your revised Vaccine Record.

To use your new Vaccine Record:

1. Press Reports\Vaccine Record\JUMP\Vaccine Record Editor.
2. Select the Vaccine Record Name that you just created from the list then and press **OK**.

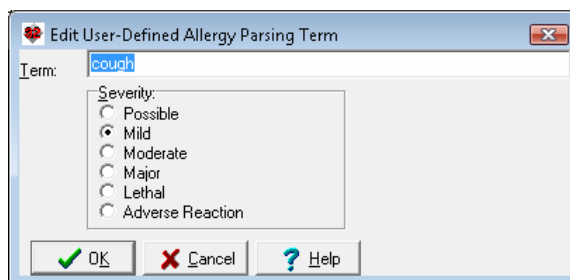
The program remembers this as being your preferred Vaccine Record layout and uses it each time you open the Vaccine Record until you select a different one from the list.

ADD YOUR OWN ALLERGY REACTION TERMS *(User's Manual, pg. 1091)*

When you mention an allergic reaction in the Writer, the Parser reads the description of the reaction and offers to add it to the Allergy Editor. By default, it only recognizes certain terms as representing an allergic reaction (such as rash, hives, anaphylaxis, etc.).

You can add your own terms to this list of reaction symptoms. Let's see how:

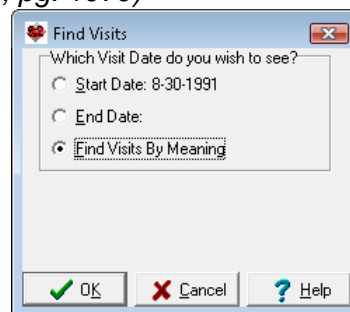
1. Press System\Parser Options.
2. Next to **Parse Allergies**, press the **Edit** button.
3. Press **Add** to add a new term to your list. Let's try adding "cough".
4. Type "cough" in the **Term** box.
5. Select a **Severity of Mild**.
6. Press **OK**.



FIND VISITS THAT DISCUSS AN ALLERGY *(User's Manual, pg. 1079)*

You can identify the visits that discuss a particular medication from inside the Allergy Editor. Let's see how this is done.

1. Press Write>Allergies and enter the name of the patient.
2. Highlight the Allergy in the Allergy Editor for which you wish to see visits.
3. Press **UTILITY\Visiter**.
4. Select **Find Visits by Meaning** and Press **OK**.
5. The program searches through all of the Visits for this patient and locates any which discuss the medication (searching by meaning). It shows you a list of all matching Visits, along with their dates and the first sentence of each of these visits. Double-click any one of them (or highlight it and press **OK**) in order to view the actual visit.



NEWS ON UPCOMING VERSIONS

We are putting the finishing touches on version 5.7. It includes dozens of new features, including many that meet the Meaningful Use requirements. Some of the new features include Advanced Order Sets, which allow you to intelligently order medications, tests, and referrals for a particular problem; Chart Merger, which combines two charts which were accidentally created for the same patient; and the Image Editor, which allows you to annotate images with arrows, freehand drawings, and explanatory labels.

SEND US YOUR TIPS

If you have tips, shortcuts, questions, or suggestions for future newsletter topics, please send them to us at:

Welford Medical Computing, Inc.
3779 Hermitage Trail
Rockford, IL 61114

or MEDCOM Information Systems
2117 Stonington Avenue
Hoffman Estates, IL 60195