

WELFORD CHART NOTES NEWSLETTER

Volume 37, No. 2



August, 2010

copyright 2010, Welford Medical Computing, Inc.

All rights reserved

LINK TO UPTODATE (User's Manual, pgs. 1151-1152)

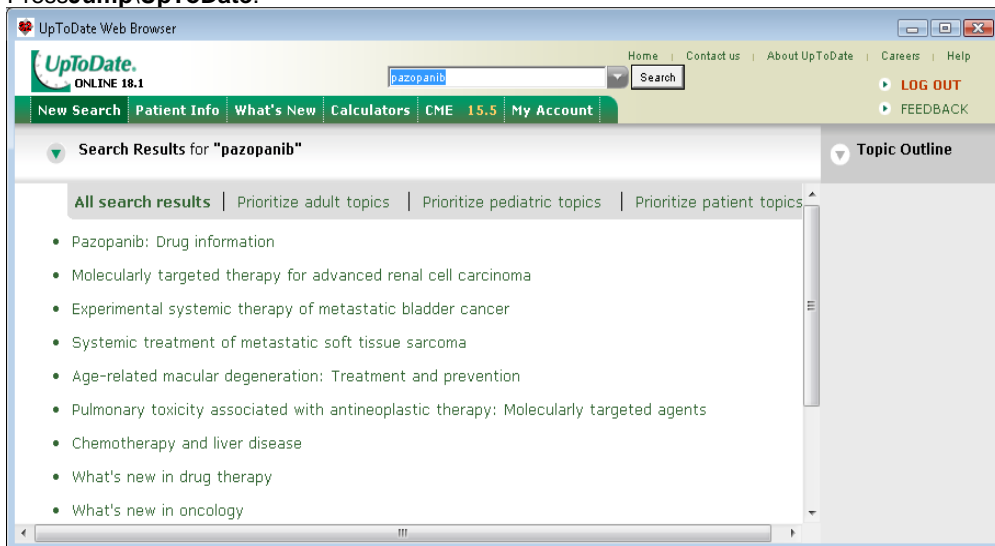
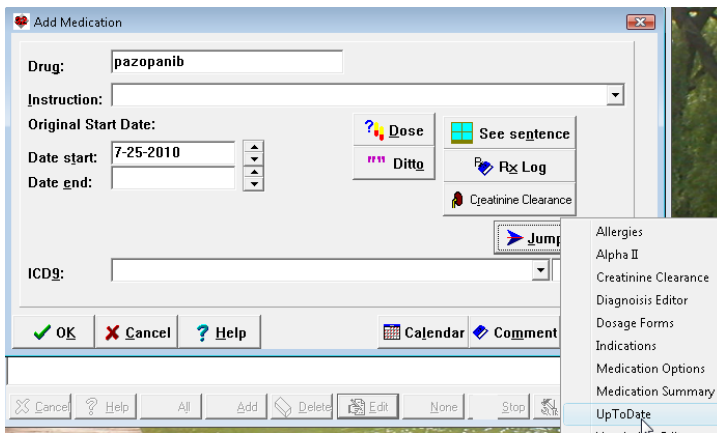
UpToDate is an encyclopedic reference of diseases and medications, composed of over 97,000 pages of text created by over 4,000 expert clinicians and used by over 400,000 health care professionals worldwide. **Welford Chart Notes** is now an Ambulatory EMR Partner of UpToDate. This means that you can access UpToDate directly from inside **Welford Chart Notes** if you are connected to the Internet. If you are not already a subscriber to UpToDate, as a user of **Welford Chart Notes** you are entitled to a 30-day free trial of UpToDate.

In order for the link to UpToDate to work, you must do two things:

1. You must activate Passwords in **Welford Chart Notes**. This is a requirement of UpToDate in order to identify which person is using UpToDate. If you have not yet activated Passwords, press System\Security\Options\Activate Passwords? and choose **Yes**.
2. You must have a file called UTDSITE.FIL on your hard drive where you have installed **Welford Chart Notes** (presumably in your \CHART folder unless you have installed somewhere else). Obtain this file from MEDCOM Information Systems if you have not already done so. This file identifies your site to UpToDate.

If you jump to UpToDate from a location where you have specified the name of a medication or diagnosis, then that medication or diagnosis is sent to UpToDate and it automatically does a search for information about that medication or diagnosis. Otherwise, you are taken to the main search page of UpToDate, where you can type in any topic you like. Let's try this now:

1. Press WriteMedications, enter the name of a patient, and press **Add**.
2. Type in "pazopanib" as the name of the medication.
3. Press **JumpUpToDate**.



4. You are shown a list of chapters in UpToDate that discuss this drug. Click on "Pazopanib: drug information" to read more about the drug. You can resize and reposition this web browser window using your mouse along the edges of the window; the program remembers the size and position you choose.
5. Click on Log Out to leave UpToDate, then close the web browser window by clicking on the red X button in the upper right corner of the window.

You can access UpToDate from inside **Welford Chart Notes** in a variety of places, including:

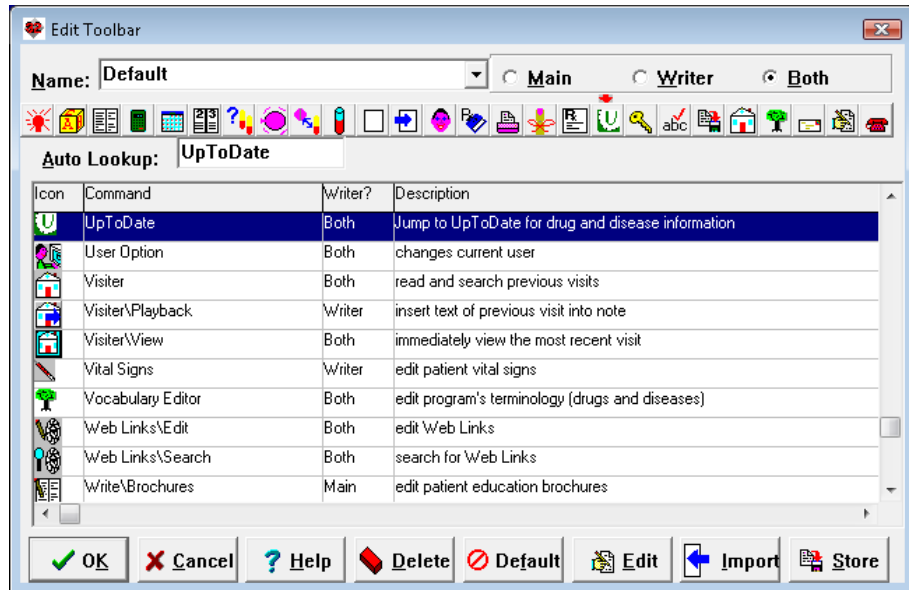
- Main Menu: **Links\UpToDate**
- Diagnosis Editor: **Utility\UpToDate**
- Dosage Forms: **UpToDate**
- Dose Checker: **UpToDate**
- Medication Editor: **Utility\UpToDate**
- Medication Summary: **Jump\UpToDate**
- Prescription Log: **Add** or **Edit\Jump\UpToDate**
- Prescription Writer: **Jump\UpToDate**
- Visitor Viewer: **GoTo\UpToDate**

You can also add a button to your Toolbar to make it easy to jump to UpToDate at any time. Let's see how to do this:

1. Press Tools\Toolbar.

2. Click on the button position where you want your UpToDate button to be placed, causing the red arrow to point to that button.

3. In **Auto Lookup**, type in UpToDate.
4. Double-click the line which has the **Command** of



5. Press **OK** to store your changes.

Using UpToDate puts an amazing wealth of medical information at your fingertips at the moment you need it.

SEND US YOUR TIPS

If you have tips, shortcuts, questions, or suggestions for future newsletter topics, please send them to us at:
 Welford Medical Computing, Inc. or MEDCOM Information Systems
 3779 Hermitage Trail 2117 Stonington Avenue
 Rockford, IL 61114 Hoffman Estates, IL 60195