

WELFORD CHART NOTES NEWSLETTER

Volume 35, No. 1



July, 2009

copyright 2009, Welford Medical Computing, Inc.

All rights reserved

VERSION 5.6 RELEASED!

We are proud to announce the release this month of Version 5.6 of **Welford Chart Notes Essential, Professional, and SQL Version**. Some of the new features in version 5.6 include:

- **@AllLabTestSince:** replaced with every time a patient had a test since a date or interval.
- **@FirstLabTest:** replaced with the result of the first time a patient had a lab test.
- **@Insurance:** replaced with the insurance information from the Name Editor.
- **@LabSince_Table flag:** reports @LabSince @functions in table format.
- **@LastVisitDate:** replaced with the date of the patient's most recent visit.
- **@LastVisitText_NoPhone:** replaced with the text of the patient's most recent visit which is not a Telephone note.
- **@LastPhysicalAssessment:** replaced with the text of the assessment portion of the patient's most recent physical.
- **@LastPhysicalPlan:** replaced with the text of the plan portion of the patient's most recent physical.
- **@WriterProvider:** replaced with the name of the current Writer Provider.
- **Allergy Adverse Reaction Severity:** you can assign a Severity of "adverse reaction" which prevents allergy class warnings.
- **Allergy Editor Visiter Find:** find visits which discuss the medication on the currently highlighted line.
- **Appointment Scheduler Forbidden Biweekly:** specify Forbiddens that occur every 2 weeks.
- **Appointment Scheduler Use Last Type Option:** Appointment Scheduler defaults to using the last Procedure Type for each patient when a new appointment is recorded.
- **Dosage Forms:** Look up the available strengths and dosing formulations for any medication. (You must subscribe to New Crop Electronic Prescribing in order to have this feature).

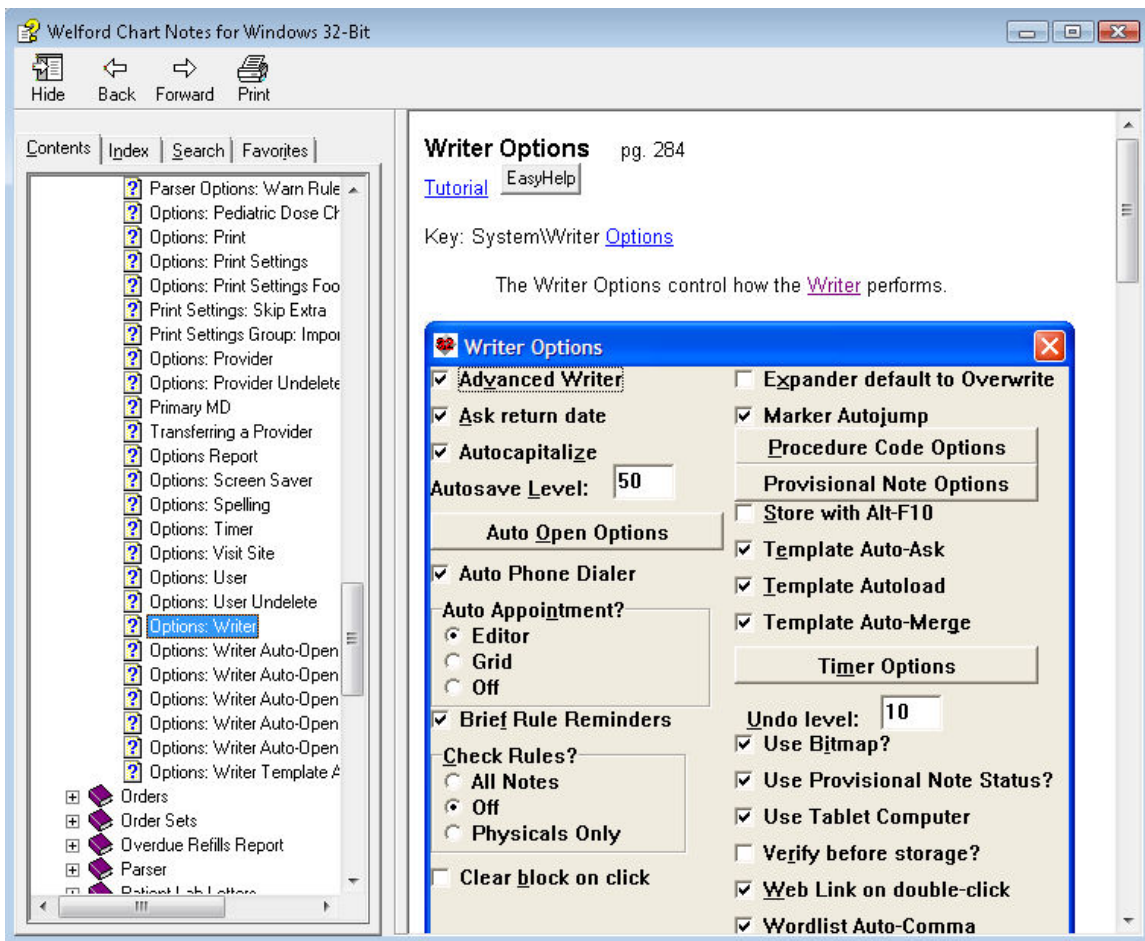
Strength	Units	Route	Formulation	Drug Name
80	mg	Oral	Tablet Sustained Release 24 hr	FLUVASTATIN
20	mg	Oral	Capsule	FLUVASTATIN
40	mg	Oral	Capsule	FLUVASTATIN

Dosage Forms

- **Electronic Prescribing Renewals:** respond to requests for refills from pharmacies electronically.



- **Expander Undelete:** restore a deleted User-Defined Expander Category.
- **Help System for Vista:** we have switched to an entirely new Help System which is in the newer .CHM format, which now allows Vista users to launch videos, EasyHelp, and Tutorial Screenshots. Help videos must now be located in the main \CHART directory, rather than in the Help Video File Path, which is no longer used.



New Help System

- **Image Utility Prior/Next Page Buttons:** press the button to go to the next or prior page in the sequence of searched images.

- **Image Utility Search Print Count Pages:** count the number of pages to be printed in an Image Utility Search.
- **Lab Book Standard Graph Show Single Data Point:** a Standard graph of height, weight, or head circumference can be plotted even if there is only a single data point.
- **Lab Book Redisplay Any Patient:** see results of all patients who had a particular test over a range of dates.
- **Lab Book Revisions:** see all changes that are made to a particular Lab Book result over time.
- **Lab Book Vocabulary Merge:** merge two different test names in the Lab Book Vocabulary so that they are now considered Synonyms of each other. This is handy if you accidentally record 2 different test names as separate tests when they actually should be considered Synonyms.
- **Medication Editor Allow Different Formulations on Different Lines Option:** allow different formulations of the same compound on different lines in the Medication Editor.
- **Medication Editor Shows Original Start Date:** the Medication Editor now shows the original date when a medication was started, rather than the date of the most recent course of treatment with that medication.
- **Medication Editor Start Date Option:** choose to see the original start date or the start date of the current course in the Medication Editor.
- **Messages Edit Show Last Visit and Next Visit Dates:** the Messages Editor shows the date of the patient's most recent visit and when the patient is next due for a visit. It highlights patients who are overdue for visits in red.
- **Name Editor Print Emergency Contacts and Insurance:** print Emergency Contacts and Insurance information from the Name Editor.
- **Name Editor Importer Includes Cell Phone Number:** the Name Editor Importer now can import a cell phone number into the Name Editor.
- **Orders Sort by Column:** you can sort Orders by any of its columns by pressing your right mouse button at the top of the column.
- **Parse Lab Book CPT Orders and Results Options:** you can choose to have the Parser look for Lab Book CPT Codes in the Orders and Results sections of your note.
- **Parser Skip Label -- Multiple:** you can have more than one Parser Skip Label within a document.
- **Parser User-Defined Allergy Terms:** each user can define terms which are recognized by the Parser as symptoms of an allergic reaction.
- **Prescription Log Fix One Date and One Patient:** you can fix a corrupt index of the Prescription Log for a single date or for a single patient in addition to fixing the entire index.
- **Prescription Log Print Only Unprinted Items:** you can designate the Prescription Log to only print items that have not already been printed.
- **Prescription Log Shows Transaction Number:** you can have the Prescription Log show the transaction number of each entry, which some third parties require you to report.
- **Prescription Use Last Amount Option:** arrange to have the Prescription Writer default to filling in the Quantity and Number of refills from the last time this patient had this medication filled.
- **Print Settings Group Footer Skip First Page Option:** you could arrange to have the program skip printing the footer on the first page of a set of pages.

- **Security Name Editor Find Next Available Patient Number:**

you can have the Name Editor use the next available patient number or turn this feature off.

- **Vaccine Record Editor:** you can design your own formats for the Vaccine Editor.

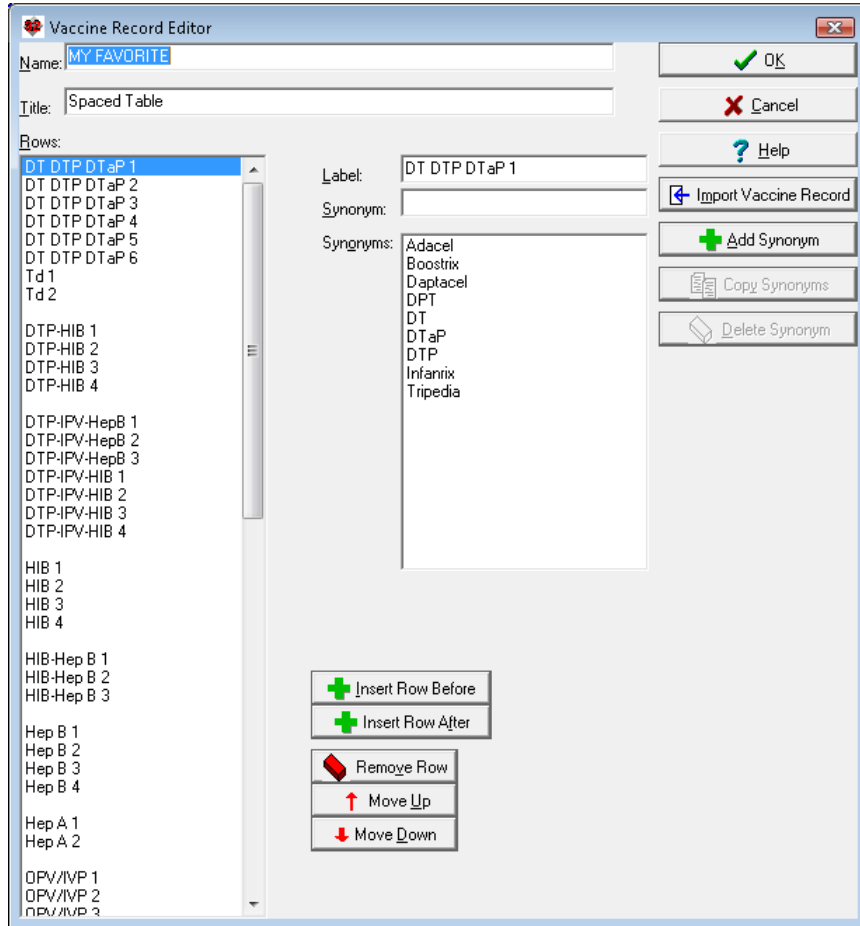
- **Vital Signs Form Include Waist Circumference:**

you can have the Vital Signs Form include a place to record the patient's waist circumference.

- **Writer Opens Nested Wordlists:**

when you click on a Wordlist in the Writer which belongs to

another Wordlist, only the Wordlist you click on opens, rather than the entire tree of Wordlists to which it belongs. This allows you to change just that portion of the sentence or paragraph that pertains to where you clicked, rather than having to reenter all of the text of the Wordlist and its parent Wordlists.



JULY QUARTERLY UPDATE RELEASED

This month we are releasing the July, 2009 Quarterly update. The update includes new medications, diagnostic terms, drug interactions, drug dosing information, spelling words, drug-disease Alerts, Web Links, algorithms, medication test reminders, cross-reacting allergies, indications, and dozens of new patient education brochures. This update has over 7800 drug interactions with over 2900 references, over 11,900 Alerts, nearly 10,000 Web Links, over 7600 Indications, and over 1550 Brochures, including new or revised Brochures on adapalene-benzoyl peroxide, clindamycin-benzoyl peroxide, dexlansoprazole, febusostat, fesoterodine, milnacipran, acne, aortic dissection, aspergillosis, asthma, carbon monoxide poisoning, enuresis, epistaxis, fibromyalgia, gout, herpes zoster, hyperthyroidism, milk alkali syndrome, myocarditis, onychomycosis, pseudomembranous colitis, psoriasis, pulmonary hypertension, sinusitis, reflux esophagitis, urinary incontinence, ventricular tachycardia, and others.

HOW DO I GET THIS NEW VERSION?

To obtain version 5.6 and the July Quarterly Update, you must be an active subscriber to the Comprehensive Support Package. If you have let your support package lapse and would like to renew and obtain the latest version, contact MEDCOM Information Systems at 800-424-0258.

SEND US YOUR TIPS

If you have tips, shortcuts, questions, or suggestions for future newsletter topics, please send them to us at:

Welford Medical Computing, Inc.
3779 Hermitage Trail
Rockford, IL 61114

or
MEDCOM Information Systems
2117 Stonington Avenue
Hoffman Estates, IL 60195